



CHV 6

C A T A L O G 2 0 2 2

series

MINI URBAN
VRF

CHV6 MINI URBAN

/// THE CHV6 MINI URBAN SERIES INTRODUCES A VERSATILE VRF HEAT PUMP SOLUTION FOR HOMES AND BUSINESSES, ALLOWING DEPENDABLE COOLING AND HEATING FOR ANY SEASON. CHV6 VRF SYSTEMS CAN BE USED TOGETHER WITH AN INDOOR UNIT INTERFACE TO ENABLE A VARIETY OF CONVENIENT FEATURES, INCLUDING ENERGY-SAVING NIGHT MODE, SMART MOTION SENSING, PRIORITY ZONING, AND INTELLIGENT SYSTEM MONITORING.

/// EXTENDED REFRIGERANT PIPING

Provides flexible installation with the maximum height difference between indoor and outdoor units up to 98 ft

/// UNION NUT CONNECTIONS

Simplify installation without the need for soldering

/// INSECT PROTECTION

Screens are utilized to prevent bugs from entering the unit and damaging electrical components



Model name			CHV6-36URBM	CHV6-48URBM	CHV6-60URBM
Unit group configuration			CHV6-36URBM	CHV6-48URBM	CHV6-60URBM
Nominal Tonnage		RT	3	4	5
Capacity	Cooling	Btu/h	36,000	48,000	57,500
	Heating	Btu/h	42,000	54,000	61,000
Input power		kW	4.71/3.81	4.71/4.65	6.25/5.77
EER (Ducted/Non-ducted)		Btu	12.6/14.2	10.2/12.6	9.2/10
COP 47°F (Ducted/Non-ducted)		W/W	4/4.5	3.4/4.1	3.1/3.4
COP 17°F (Ducted/Non-ducted)		W/W	2.9/3.2	2.4/2.7	2.2/2.3
Power supply		V/Ph/Hz	208/230 / 1Ph / 60Hz		
Electrical parameters	MCA	A	31.4	32.8	33.2
	MOP	A	45	45	45
Maximum connectable indoor units		Qty	9	11	11
Sound pressure level		dB(A)	52	55	56
Dimensions (H x W x D)		in	52-1/2 x 38-3/16 x 14-9/16	52-1/2 x 38-3/16 x 14-9/16	52-1/2 x 38-3/16 x 14-9/16
Connection pipe diameter	High/Low pressure gas pipe	in	3/8	3/8	3/8
	Liquid pipe		5/8	5/8	5/8
Refrigerant			R410A		
Compressor			Rotary		
Compressor quantity			1	1	1
Weight	Net Weight	lbs	229	229	231
	Gross Weight		256	256	256
Piping design	Height difference between ODU and IDU	ft	98.4	98.4	98.4
	Height difference between IDUs	ft	32.8	32.8	32.8
	Total piping length	ft	394	394	394
Operation range	Cooling	°F	23~114		
	Heating	°F	-4~60		

- The above cooling and heating capacities show the capacities when the outdoor unit is operated with the 100% rating of indoor units, Cooling Operation Conditions: Indoor Air Inlet Temperature: 80°F DB 67°F WB, Outdoor Air Inlet Temperature: 95°F DB, Piping Length: 25ft., Piping Lift: 0ft., Heating Operation Conditions: Nominal Heating Condition, Indoor Air Inlet Temperature: 70°F DB, Outdoor Air Inlet Temperature: 47°F DB 43°F WB. Heating Operation Conditions: Low Temp. Heating Condition, Indoor Air Inlet Temperature: 70°F DB, Outdoor Air Inlet Temperature: 17°F DB 15°F WB
- Rated capacity and efficiency are certified under AHRI Standard 1230. Ratings are subject to change without notice. Current certified ratings are available at www.ahridirectory.org.
- The above noise values are measured in the anechoic chamber without reflected echo, therefore the impact of the reflected echo must be included at the scene. Measurement point: 3.3ft. from the service cover surface and 4.9ft. from floor level.
- The actual appearance of outdoor units may differ from photos.
- Specifications are subject to change without notice.

CHV6 MINI URBAN



/// CEILING CASSETTES



Model name		CHV-09SCC 4W	CHV-12SCC 4W	CHV-15SCC 4W	CHV-19SCC 4W	CHV-22SCC 4W	CHV-24SCC 4W		
Capacity	Cooling	Btu/h	9,600	12,300	15,400	19,100	21,500	24,200	
	Heating	Btu/h	10,900	13,700	17,100	21,500	24,200	27,300	
Input power		W	20	30	30	40	60	70	
Power supply		V/Ph/Hz	208/230 / 1Ph / 60Hz						
Electrical parameters	MCA	A	1.19						
	MOP	A	15						
Airflow rate		CFM	314/357/386/ 429/479/536	325/386/421/ 457/500/607	400/454/486/ 532/571/750	446/486/554/ 568/625/786	464/539/607/ 654/714/929	525/582/643/ 682/750/96	
Sound pressure level		dB(A)	26/26/27/28/ 28/30	26/27/28/29/ 29/32	26/27/29/29/ 31/33	26/28/28/30/ 31/34	28/29/31/32/ 33/36	28/29/31/32/ 33/36	
Dimensions (H x W x D)		in	9-11/16 x 33-1/16 x 33-1/16	9-11/16 x 33-1/16 x 33-1/16	9-11/16 x 33-1/16 x 33-1/16	9-11/16 x 33-1/16 x 33-1/16	9-11/16 x 33-1/16 x 33-1/16	9-11/16 x 33-1/16 x 33-1/16	
Decoration panel		in	1-27/32 x 37-13/32 x 37-13/32						
Weight		lbs	44	44	46	46	51	51	
Connection pipe diameter	Liquid	in	1/4					3/8	
	Gas		1/2					5/8	
	Drain		1-1/4						

Model name		CHV-27SCC4W	CHV-30SCC4W	CHV-38SCC4W	CHV-48SCC4W	CHV-54SCC4W	
Capacity	Cooling	Btu/h	27,300	30,700	38,200	47,800	54,600
	Heating	Btu/h	30,700	34,100	42,700	54,600	61,400
Input power		W	60	60	130	130	130
Power supply		V/Ph/Hz	208/230 / 1Ph / 60Hz				
Electrical parameters	MCA		1.19		2.15		
	MOP		15				
Airflow rate		CFM	964/786/725/668/ 600/550	964/821/739/700/ 632/575	1321/1071/979/ 886/800/700	1321/1196/1057/ 971/864/800	850/914/1032/ 1096/1214/1321
Sound pressure level		dB(A)	30/31/33/35/ 36/37	30/31/33/35/ 36/37	33/34/36/38/ 40/42	34/36/38/40/ 44/46	36/38/40/41/ 44/46
Dimensions (H x W x D)		in	11-5/16 x 33-1/16 x 33-1/16	11-5/16 x 33-1/16 x 33-1/16	11-5/16 x 33-1/16 x 33-1/16	11-5/16 x 33-1/16 x 33-1/16	11-5/16 x 33-1/16 x 33-1/16
Decoration panel		in	1-27/32 x 37-13/32 x 37-13/32				
Weight		lbs	57	57	57	57	57
Connection pipe diameter	Liquid	in	3/8				
	Gas		5/8				
	Drain		1-1/4				

1. The nominal cooling capacity and heating capacity are based on the following conditions: Cooling Operation Conditions

Indoor Air Inlet Temperature: 80°F DB, 66°F WB
Outdoor Air Inlet Temperature: 95°F DB Piping Length: 24.6ft, Piping Lift:0ft

Heating Operation Conditions

Indoor Air Inlet Temperature: 68°F DB
Outdoor Air Inlet Temperature: 44°F DB, 42°F WB

2. The sound pressure level is based on the following conditions: 4.9ft beneath the unit. The above data was measured in an anechoic chamber so that the reflected sound should be taken into consideration in the field.

3. The actual appearance of outdoor units may differ from photos.

4. Specifications are subject to change without notice.

CHV6 MINI URBAN



/// MINI CEILING CASSETTES



Model name			CHV-05MCC 4W	CHV-07MCC 4W	CHV-09MCC 4W	CHV-12MCC 4W	CHV-15MCC 4W	CHV-17MCC 4W	CHV-19MCC 4W
Capacity	Cooling	Btu/h	5,100	7,480	9,520	12,240	15,300	17,000	19,040
	Heating	Btu/h	6,800	8,500	11,220	14,280	17,000	19,040	21,420
Input power		W	14	14	14	16	22	30	40
Power supply		V/Ph/Hz	208/230 / 1Ph / 60Hz						
Electrical parameters	MCA	A	0.23	0.23	0.29	0.35	0.41	0.49	0.66
	MOP	A	15						
Airflow rate		CFM	256/232/ 220/199	256/232/ 220/199	280/256/ 232/208	292/256/ 232/208	333/312/ 252/238	393/339/ 312/252	446/387/ 333/286
Sound pressure level		dB(A)	30/28/26	30/28/26	32/28/26	32/28/26	38/31/28	42/38/31	45/36/34
Dimensions (H x W x D)		in	8-15/32 x 22-7/16 x 22-7/16						
Decoration panel		in	1-7/16 x 24-7/16 x 24-7/16						
Weight		lbs	32	32	32.6	32.6	34.8	35	35
Connection pipe diameter	Liquid	in	1/4						
	Gas		1/2						
	Drain		1-1/4						

- The nominal cooling capacity and heating capacity are based on the following conditions: Cooling Operation Conditions Indoor Air Inlet Temperature: 80°F DB, 66°F WB Outdoor Air Inlet Temperature: 95°F DB Piping Length: 24.6ft, Piping Lif:0ft Heating Operation Conditions Indoor Air Inlet Temperature: 68°F DB, 44°F WB Outdoor Air Inlet Temperature: 44°F DB, 42°F WB
- The sound pressure level is based on the following conditions: 4.9ft beneath the unit. The above data was measured in an anechoic chamber so that the reflected sound should be taken into consideration in the field
- The actual appearance of outdoor units may differ from photos.
- Specifications are subject to change without notice.

/// WALL MOUNTS



Model name			CHV-07WTU	CHV-09WTU	CHV-12WTU	CHV-15WTU	CHV-18WTU	CHV-24WTU	CHV-28WTU
Capacity	Cooling	Btu/h	7,500	9,600	12,300	15,400	19,100	24,200	28,700
	Heating	Btu/h	8,500	11,300	13,700	17,100	21,500	27,300	28,700
Input power		W	20	20	30	30	30	70	80
Power supply		V/Ph/Hz	208/230 / 1Ph / 60Hz						
Electrical parameters	MCA	A	0.45	0.45	0.53	0.56	0.56	0.94	1.02
	MOP	A	15						
Airflow rate		CFM	347/323/ 305/288/ 264/247	347/323/ 305/288/ 264/247	364/323/ 305/288/ 264/247	570/529/ 500/470/ 429/405	705/635/ 600/529/ 470/411	705/635/ 600/529/ 470/411	823/776/ 705/600/ 500/429
Sound pressure level		dB(A)	36/35/33/ 32/30/28	36/35/33/ 32/30/28	36/35/33/ 32/30/28	38/37/36/ 32/31/29	40/38/36/ 35/33/31	45/42/41/ 38/35/31	50/48/45/ 41/36/33
Dimensions (H x W x D)		in	10-5/8 x 33-17/64 x 8			12-13/32 x 37-51/64 x 9-1/16	12-13/32 x 44-3/32 x 9-1/16		
Weight		lbs	20	20	20	30	35	35	35
Connection pipe diameter	Liquid	in	1/4		3/8	3/8	3/8		
	Gas		3/8		1/2	1/2	5/8		
	Drain		5/8						

- The nominal cooling capacity and heating capacity are based on following conditions: The above data was measured in an anechoic chamber so that reflected sound should be taken into consideration in the field. Cooling Operation Conditions Indoor Air Inlet Temperature:80°F DB, 66°F WB Outdoor Air Inlet Temperature:95°F DB Heating Operation Conditions Indoor Air Inlet Temperature:68°F DB Outdoor Air Inlet Temperature:44°F DB, 42°F WB Piping Length: 2.6ft. Piping Lift:0ft.)
- The sound pressure level is based on following conditions:2.6ft.(0.8m) below the unit and 3.3ft.(1m) in front of the unit. The above data was measured in an anechoic chamber so that reflected sound should be taken into consideration in the field. The above noise values are measured under the condition of air supply.
- The actual appearance of outdoor units may differ from photos.
- Specifications are subject to change without notice.

CHV6 MINI URBAN



/// SLIM DUCTS (Low static pressure)

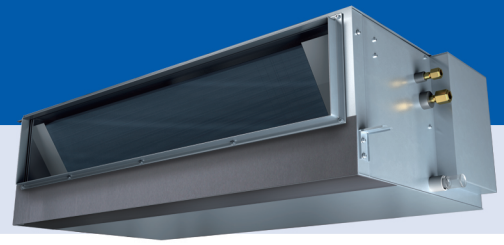


Model name			CHV-05SDL SP	CHV-07SDL SP	CHV-09SDL SP	CHV-12SDL SP	CHV-15SDL SP	CHV-17SDL SP
Capacity	Cooling	Btu/h	5,800	7,500	9,600	12,300	15,300	17,100
	Heating	Btu/h	6,500	8,500	11,300	13,600	17,100	19,100
Input power		W	30	30	50	50	60	60
Power supply		V/Ph/Hz	208/230 / 1Ph / 60Hz					
Electrical parameters	MCA	A	0.47	0.56	0.64	0.64	0.74	0.74
	MOP	A	15					
Airflow rate		CFM	247/230/215/201/184/170	247/230/215/201/184/170	318/286/257/237/208/184	318/286/257/237/208/184	424/381/332/286/240/194	424/381/332/286/240/194
Sound pressure level		dB(A)	28/27/26/24/23/21	28/27/26/24/23/21	35/32/32/30/26/23	35/32/32/30/26/23	23/26/30/32/32/35	23/26/30/32/32/35
Static pressure range		in.W.G	0.04 (0-0.04-0.12)	0.04 (0-0.04-0.12)	0.04 (0-0.04-0.12)	0.04 (0-0.04-0.12)	0.04 (0-0.04-0.12)	0.04 (0-0.04-0.12)
Dimensions (H x W x D)		in	7-9/16 x 27-9/16 x 17-33/64	7-9/16 x 27-9/16 x 17-33/64	7-9/16 x 27-9/16 x 17-33/64	7-9/16 x 27-9/16 x 17-33/64	7-9/16 x 35-53/64 x 17-33/64	7-9/16 x 35-53/64 x 17-33/64
Weight		lbs	35.3	35.3	37.5	37.5	44.1	44.1
Connection pipe diameter	Liquid	in	1/4			1/4	1/4	1/4
	Gas		1/2			1/2	1/2	1/2
	Drain		1					

Model name			CHV-19SDLSP	CHV-22SDLSP	CHV-24SDLSP
Capacity	Cooling	Btu/h	19,100	21,500	24,200
	Heating	Btu/h	21,500	24,200	27,300
Input power		W	60	90	240
Power supply		V/Ph/Hz	208/230 / 1Ph / 60Hz		
Electrical parameters	MCA	A	0.74	1.12	1.15
	MOP	A	15		
Airflow rate		CFM	477/441/396/353/311/272	636/569/505/434/370/307	636/569/505/434/370/307
Sound pressure level		dB(A)	35/32/30/28/25/23	38/36/35/33/31/24	38/36/35/33/31/24
Static pressure range		in.W.G	0.04(0-0.04-0.12)	0.04(0-0.04-0.12)	0.04(0-0.04-0.12)
Dimensions (H x W x D)		in	7-9/16 x 46-29/64 x 17-33/64	7-9/16 x 46-29/64 x 17-33/64	7-9/16 x 46-29/64 x 17-33/64
Weight		lbs	52.9	52.9	52.9
Connection pipe diameter	Liquid	in	1/4		3/8
	Gas		1/2		5/8
	Drain		1		

- The nominal cooling capacity is the combined capacity of the Hisense standard split system. Cooling Operation Conditions Indoor Air Inlet Temperature: 80°F DB, 66°F WB Outdoor Air Inlet Temperature: 95°F DB Heating Operation Conditions Indoor Air Inlet Temperature: 68°F DB Outdoor Air Inlet Temperature: 44°F DB, 42°F WB Piping Length: 24.6ft, Piping Lift: 0ft
- The sound pressure level is based on following conditions. 4.9ft Beneath the Unit. With Discharge Duct(6.5ft.)and Return Duct(3.3ft.). Voltage of the power source for the indoor fan motor is 208V. The above data was measured in an anechoic chamber so that reflected sound should be taken into consideration in the field.
- The data for external pressure *1)indicates Standard Pressure Setting values when a filter is not used.
- The actual appearance of outdoor units may differ from photos.
- Specifications are subject to change without notice.

CHV6 MINI URBAN



/// SLIM DUCTS (High static pressure)



Model name			CHV-07SDHSP	CHV-09SDHSP	CHV-12SDHSP	CHV-15SDHSP	CHV-19SDHSP	CHV-24SDHSP
Capacity	Cooling	Btu/h	7,500	9,600	12,300	15,400	19,100	24,200
	Heating	Btu/h	8,500	10,900	13,700	17,100	21,600	27,400
Input power		W	40	40	55	55	55	82
Power supply		V/Ph/Hz	208/230 / 1Ph / 60Hz					
Electrical parameters	MCA	A	1.81				2.27	2.27
	MOP	A	15					
Airflow rate		CFM	318/283/240/ 222/205/187	318/283/240/ 222/205/187	424/388/353/ 318/283/254	424/388/353/ 318/283/254	512/459/406/ 371/335/307	671/600/530/ 459/388/335
Sound pressure level		dB(A)	30/27/23/21/ 20/19	30/27/23/21/ 20/19	35/33/32/28/ 26/24	35/33/32/28/ 26/24	33/30/27/25/ 23/22	36/34/31/28/ 24/22
Static pressure range		in.W.G	0.12/0.16/0.20/0.24/0.28/0.32/0.36/0.40/0.44/0.48/0.52/0.56/0.60					
Dimensions (H x W x D)		in	10-5/8 x 25 -19/32+2-61 x 28-11/32	10-5/8 x 25 -19/32+2-61 x 28-11/32	10-5/8 x 25 -19/32+2-61 x 28-11/32	10-5/8 x 25 -19/32+2-61 x 28-11/32	10-5/8 x 35 -7/16+2-61/64 x 28-11/32	10-5/8 x 35 -7/16+2-61/64 x 28-11/32
Weight		lbs	51	51	53	53	66	66
Connection pipe diameter	Liquid	in	1/4				1/4	3/8
	Gas		1/2				5/8	5/8
	Drain		1					

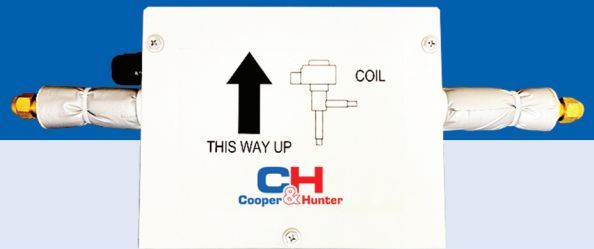
Model name			CHV-30SDHSP	CHV-38SDHSP	CHV-48SDHSP	CHV-54SDHSP
Capacity	Cooling	Btu/h	30,800	38,000	48,000	54,500
	Heating	Btu/h	34,200	42,500	54,500	61,500
Input power		W	100	132	180	223
Power supply		V/Ph/Hz	208/230 / 1Ph / 60Hz			
Electrical parameters	MCA	A	2.68	2.68	5.04	5.04
	MOP	A	15			
Airflow rate		CFM	883/812/742/ 671/600/530	989/883/812/ 742/671/600	1254/1148/ 1042/936/ 830/724	1377/1254/ 1095/936/ 830/770
Sound pressure level		dB(A)	34/32/30/28/ 25/22	37/35/31/29/ 26/23	38/36/34/31/ 29/26	41/38/35/33/ 30/27
Static pressure range		in.W.G	0.20/0.24/0.28/0.32/0.36/0.40/0.44/0.48/0.52/0.56/0.60/0.64/0.68/0.72/0.76/0.80			
Dimensions (H x W x D)		in	11-13/16 x 43-5/16+2-61/ 64 x 31-1/2	11-13/16 x 43-5/16+2-61/ x 31-1/2	11-13/16 x 55 -1/8+2-61/64 x 31-1/2	11-13/16 x 55 -1/8+2-61/64 x 31-1/2
Weight		lbs	88	88	108	108
Connection pipe diameter	Liquid	in	3/8			
	Gas		5/8			
	Drain		1			

1. The nominal cooling capacity is the combined capacity of the Cooper & Hunter standard split system. Cooling Operation Conditions

Indoor Air Inlet Temperature: 80°F DB, 66°F WB
 Outdoor Air Inlet Temperature: 95°F DB
 Heating Operation Conditions Indoor Air Inlet Temperature: 68°F DB
 Outdoor Air Inlet Temperature: 44°F DB, 42°F WB
 Piping Length: 24.6ft, Piping Lift: 0ft

2. The sound pressure level is based on following conditions. 4.9ft Beneath the Unit. With Discharge Duct(6.5ft.)and Return Duct(3.3ft.). Voltage of the power source for the indoor fan motor is 208V. The above data was measured in an anechoic chamber so that reflected sound should be taken into consideration in the field.
 3. The data for external pressure *1)indicates Standard Pressure Setting values when a filter is not used.
 4. The actual appearance of outdoor units may differ from photos.
 5. Specifications are subject to change without notice.

CHV6 MINI URBAN



/// AHU CONNECTION KIT

Models			SPAK-02	SPAK-04	SPAK-06	SPAK-10	SPAK-20	SPAK-30
Power supply		V/Ph/Hz	208/230 / 1Ph / 60Hz					
Nominal capacity		Ton	1.5	3	5	8	16	24
		HP	2	4	6	10	20	20
Allowed heat exchanger capacity (H/M/L)	Cooling	kBtu/h	19.1/17.1/13.6	38.2/30.7/24.2	54.6/47.8/38.2	95.5/85.3/68.2	191.1/177.4/170.6	290.0/279.8/273.0
	Heating	kBtu/h	24.2/19.1/15.7	42.7/34.1/27.3	61.4/54.6/42.7	107.5/95.5/76.4	215.0/204.7/191.1	324.2/313.9/307.1
Heat exchanger volume	Min	in ³	34.8	62.9	117.2	237.4	516.9	754.3
	Max	in ³	70.8	144.6	178.2	290.5	608.4	898.9
Equivalent indoor unit capacity		Ton	1.5	3	5	8	16	24
		HP	2	4	6	10	20	30
Control box model			SPAK-/1					
Expansion valve box model			SPAK-02	SPAK-04	SPAK-06	SPAK-10	SPAK-20	SPAK-30

Cooling and heating capacity data based on the following indoor and outdoor temperature conditions:

/// CONTROLLERS, AUTOMATION, ACCESSORIES AND SUPPORT

Models	Ceiling Cassette	Mini Ceiling Cassette	Slim duct low static pressure	Slim duct high static pressure	Wall mount	AHU kit
Controllers						
SPWT-A01	0	0	0	0	0	√
SPWT-C01	0	x	0	0	x	x
SPRC-101	0	0	0	0	√	0
Receiver Kit						
SPWRK-Z01	x	x	0	0	0	x
SPWRK-V02	0	x	x	x	x	x
SPWRK-T03	x	0	x	x	x	x
Building Automation Gateway						
Modbus	0	0	0	0	0	0
BACNET	0	0	0	0	0	0
KNX	0	0	0	0	0	0
Accessories						
3D Air-flow Panel	x	x	0	0	x	x
Drain Pump SPIDP-DHP07/24	0	0	0	0	0	x
Drain Pump SPIDP-DHP07/24	0	0	0	0	0	x
Drain Pump SPIDP-DHP27/54	0	0	0	0	0	x
Hi-Motion SPHNS-S01E	x	x	0	0	0	x
Motion Sensor SPHNS-MACN	x	0	x	x	x	x
Motion Sensor SPHNS-01E	0	x	x	x	x	x
Fresh Air Duct Adapter	0	0	x	x	x	x
Humidity Sensor SPHDS-S01E	0	0	0	0	0	x
Support	0	0	0	0	0	0

- √ Standard
- 0 Optional
- x Incompatible

CONTROL SYSTEM

/// SPWT -A01



- Cool/Heat/Dry/Fan/Auto
- Air filter cleaning reminder
- 1 °F temperature setting
- Additional settings
- 3D airflow customization
- 72 hour timer
- Backlight control
- Max. 16 indoor units can be connected
- Error code display
- Built-in temperature sensor
- Dehumidification
- Check
- One touch test run
- Self cleaning
- Multiple speeds
- Swinging b

/// SPWT-C01



- Cooling/Heating/Auto
- Fan speed
- 24 hour timer
- Check function
- Error code history display
- PCB inspection indoor/outdoor
- Backlight
- Wireless control available
- Breeze mode
- ECO (energy saving)
- Sleep
- 3D airflow
- Dehumidification
- Performance monitoring
- Main-auxiliary control
- Air filter cleaning reminder
- Automatic test run
- Self-diagnosis function
- Built-in temperature sensor
- Individual blind control
- Health (Air Fresh)
- Quiet
- Window contact design
- Self cleaning

/// SPRC- 101



- Cooling/Heating/Auto
- Performance monitoring
- Automatic test run
- Backlight
- Individual blind control
- Health (Air Fresh)
- Sleep
- 3D airflow
- Fan speed
- 24 hour timer
- Self-diagnosis function
- Built-in temperature sensor
- Breeze mode
- ECO (energy saving)
- Sleep
- Self cleaning

/// WIRELESS RECEIVER KIT

SPWRK-T03
 SPWRK-Z01
 SPWRK-V02



GENERAL FEATURES & FUNCTIONS



48-INCH DRAINAGE HEIGHT

Some CHV indoor models are equipped with a drain pump to pull condensation upward and remove water from the units with a drainage height of up to 48 inches.



SELF-DIAGNOSIS

CHV indoor units use the self-diagnosis function to monitor and analyze malfunctions. Error codes are displayed on LED displays, remote controllers, or PCB boards as a general troubleshooting guide.



COMPACT SIZE

Compact indoor units can be conveniently transported and installed, even in small spaces.



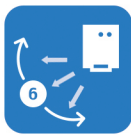
REMOTE CONTROL

Indoor units can be controlled with wireless remote controller featuring an LCD display.



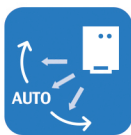
SILENT OPERATION

CHV units create minimal sound pressure during operation.



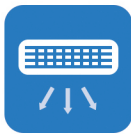
ADJUSTABLE LOUVER POSITION

CHV indoor units feature adjustable louvers for more precise directional air flow.



SWING LOUVER

CHV ceiling cassettes and wall mounts include louvers which swing automatically for even air distribution.



3D AIR-FLOW PANEL (OPTIONAL)

The optional 3D air-flow panel, which includes an LED display and adjustable horizontal and vertical louvers, enables system control with a Cooper&Hunter wireless remote controller.



FAN SPEED

All CHV indoor units have 6 selectable fan speeds.



AUTO FAN SPEED

Fan speed rotation is automatically controlled to achieve optimum efficiency and comfort.



EASY MAINTENANCE

CHV indoor units provide convenient access to filters and other important components for easy upkeep and increased longevity.



WIDE CAPACITY RANGE

CHV indoor units come in a wide range of capacities across 5 different indoor model types.



AUTO RESTART

The automatic restart function sets the indoor units to automatically restart and resume previous settings in the event of a power outage.



LOW TEMPERATURE COOLING

The target temperature of indoor units can be set as low as 60°F.



WIFI ADAPTER (OPTIONAL)

An optional WiFi adapter can be installed to enable system control via iOS or Android smart device for up to 64 indoor units.



WIRELESS RECEIVER

Indoor units can be controlled via C&H wireless remote controller when a wireless receiver is installed. CHV wall mounts include a wireless receiver, but it is an optional accessory for other model types.



HUMIDITY SENSOR (OPTIONAL)

The optional humidity sensor allows access to more precise dehumidification control.



MOTION SENSOR (OPTIONAL)

Intelligent motion sensing technology enables auto ON/OFF, auto fan, and auto temperature adjustments based on movement and occupancy of the room.



FRESH AIR INTRODUCTION

Fresh air can be directed into rooms with an optional adapter or direct connection to the air return segment of the unit.



STANDARD FILTER INCLUDED

A washable, long-life filter is included as a standard part.

CHV6 MINI URBAN

/// C&H SELECTION SOFTWARE

CONTRACTORS AND TECHNICIANS CAN NOW CONFIGURE AND SAVE THEIR COOPER&HUNTER HVAC SYSTEMS AND PROJECTS ON OUR CONVENIENT WEB PORTAL.

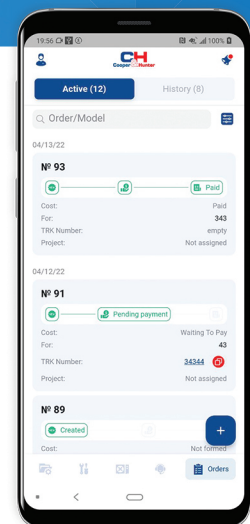
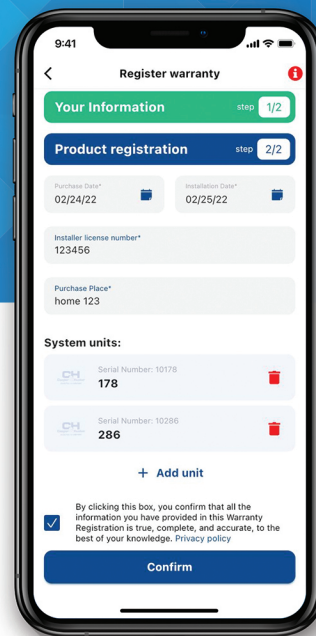
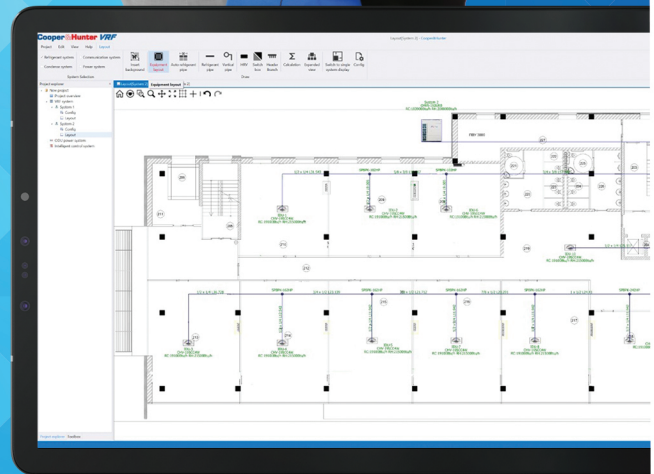
C&H SELECTION SOFTWARE CAN BE USED TO CREATE PROJECTS OF ANY COMPLEXITY, MIXING AND MATCHING COOPER&HUNTER'S HVAC EQUIPMENT TO CREATE THE PERFECT PERSONALIZED SYSTEM.

UNIT COMPATIBILITY CAN BE CONVENIENTLY CALCULATED ON ANY IOS OR WINDOWS PC DEVICE.

C&H Selection Software does not only ensure system compatibility and provide easy access to reference important project details, but can also automatically generate system suggestions, connection pipe lengths, and detailed project reports.

Users are also able to upload blueprints and project plans into the program to configure their project directly on the digital copy and avoid drawing by hand.

CH
Cooper & Hunter



/// C&H TECHNICAL SUPPORT APP

For additional support, Cooper&Hunter has developed a new C&H Technical Support app, where users can register units for warranty, check error codes for troubleshooting guides, download product manuals, order replacement parts, and chat with C&H Technical Support agents.

CHV6 MINI URBAN





3550 NW 113th Ct Doral, FL 33178
INFO@COOPERANDHUNTER.US
+1-786-953-6706
+1-786-564-6546



@cooperandhunterusa



@cooperandhunterusa



cooperhunterusa



CooperandHunterusa

CHV6 CATALOG 2022
MINI URBAN
VRF

Design and specifications are subject to change without notice. Pictures and diagrams are for reference only and are subject to change without notice.